

Ellie Inspired



Simple  
Elegance

Sizes 1-12



### Finished Garment Measurements

Size	1	2	3	4	5	6	7	8	9	10	11	12
Length	19"	20 ½"	22"	23 ½"	25"	26 ½"	28"	29 ½"	31"	32 ½"	34"	35 ½"

Simple Elegance is a very simple dress that can be elegant with dressier fabrics or casual for spring/summer in cottons. The skirt is gathered to a narrow band and shoulder straps are added. Buttons up the back.



**Fabric Requirements (in yards)**

Size	1	2	3	4	5	6	7	8	9	10	11	12
Dress	½	½	½	½	½	1 1/8	1 1/8	1 ¼	1 ¼	1 3/8	1 3/8	1 ½
Contrast (straps, bindings, bodice, and ruffle)	¾	¾	¾	¾	¾	1	1	1	1	1	1 ½	1 ½

\*Fabric requirements based on 45" wide fabric.

Suggested fabrics: Any medium to light-weight fabrics such as cotton, pique, seersucker, charmeuse, taffeta, silk, voile, batiste, organdy

Notions: Two ½" buttons

# Cutting out your Fabric

Cut out the bodice, straps, skirt, and ruffle according to the chart below:

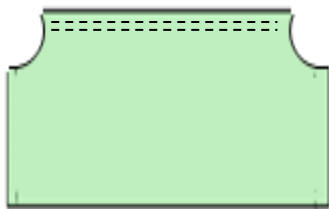
Size	Bodice	Straps	Skirt	Ruffle	Arm Bindings
1	2"W x 7 ½"L (cut 2)	3 ½"W x 8 ½"L (cut 2)	18"W x 15"L (cut 2)	44"W x 8"L (cut 2)	2 ½" W x 12" L (cut 2)
2	2 ¼"W x 8"L (cut 2)	3 ½"W x 8 ½"L (cut 2)	20"W x 16"L (cut 2)	44"W x 8"L (cut 2)	2 ½" W x 12" L (cut 2)
3	2 ½"W x 8 ½"L (cut 2)	3 ½"W x 8 ½"L (cut 2)	22"W x 17"L (cut 2)	44"W x 8"L (cut 2)	2 ½" W x 12" L (cut 2)
4	2 ¾"W x 9"L (cut 2)	3 ½"W x 8 ½"L (cut 2)	22"W x 18"L (cut 2)	44"W x 8"L (cut 2)	2 ½" W x 12" L (cut 2)
5	3"W x 9 ½"L (cut 2)	3 ½"W x 8 ½"L (cut 2)	22"W x 19"L (cut 2)	44"W x 8"L (cut 2)	2 ½" W x 12" L (cut 2)
6	3 ¼"W x 10"L (cut 2)	3 ½"W x 8 ½"L (cut 2)	24"W x 20"L (cut 2)	48"W x 8 ½"L (cut 2)	2 ½" W x 12" L (cut 2)
7	3 ½"W x 10 ½"L (cut 2)	3 ½"W x 8 ½"L (cut 2)	26"W x 21"L (cut 2)	52"W x 9"L (cut 2)	2 ½" W x 12" L (cut 2)
8	3 ¾"W x 11"L (cut 2)	3 ½"W x 8 ½"L (cut 2)	28"W x 22"L (cut 2)	56"W x 9 ½"L (cut 2)	2 ½" W x 12" L (cut 2)
9	4"W x 11 ½"L (cut 2)	3 ½"W x 8 ½"L (cut 2)	30"W x 23"L (cut 2)	60"W x 10"L (cut 2)	2 ½" W x 12" L (cut 2)
10	4 ¼"W x 12"L (cut 2)	3 ½"W x 8 ½"L (cut 2)	32"W x 24"L (cut 2)	64"W x 10 ½"L (cut 2)	2 ½" W x 12" L (cut 2)
11	4 ½"W x 12 ½"L (cut 2)	3 ½"W x 8 ½"L (cut 2)	34"W x 25"L (cut 2)	68"W x 11"L (cut 2)	2 ½" W x 12" L (cut 2)
12	4 ¾"W x 13"L (cut 2)	3 ½"W x 8 ½"L (cut 2)	36"W x 26"L (cut 2)	72"W x 11 ½"L (cut 2)	2 ½" W x 12" L (cut 2)

# Sewing the Dress

1. Cut out the armcyes at the top of each of the skirt rectangles. Place the curve so that the top and sides line up and cut on the curve.



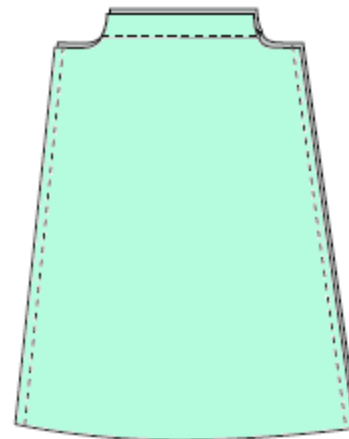
2. Stitch two rows of gathering stitches across both the front and back skirts.



3. Fold the yoke pieces in half, lengthwise with wrong sides together. Pin one yoke to a skirt piece, with raw edges together.



4. Stitch, using a finished seam edge, and press the seam up. Repeat with other yoke.
5. Place front and back skirts together with right sides facing each other. Stitch each side seam, using a finished seam edge.

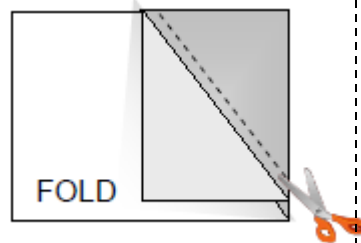


# Binding the Armscyes

## Binding the Armscyes:

How to cut bias bindings for the armscyes:

Cut on the bias grain of fabric to stretch around curves easier. Fold the fabric at a 45° angle to the selvages. Measure the length needed and cut at a 45° angle.

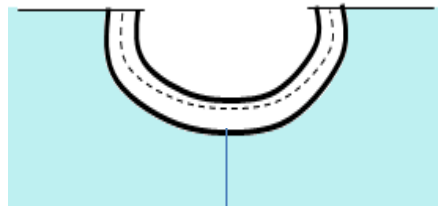


1. Press the arm bindings in half, lengthwise, wrong sides together.

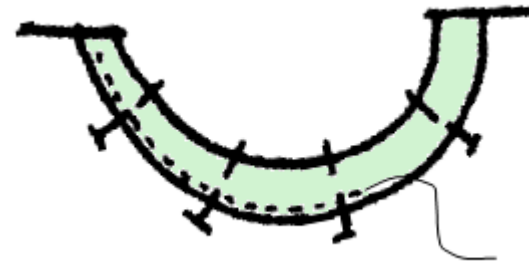


2. Pin raw edges of binding strip to wrong side of dress at the armscye curve.

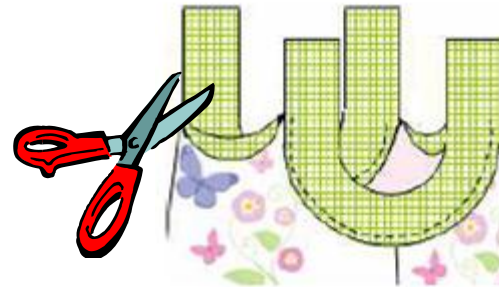
3. Stitch 1/4" from raw edges.



4. Press seam allowance toward the binding. Turn binding to right side of dress, enclosing the raw edge. Pin so that the finished edge of the binding overlaps the first stitching line just 1/4". Stitch in place.



5. Trim ends even with the neckline edge.



# Attaching the Shoulder Straps

## Attaching the Shoulder Straps:

1. Press the shoulder straps in half, lengthwise, right sides together.



2. Stitch the long, open edge together. Turn right side out and press well.



3. Repeat with other strap.

5. Attach to the front and back bodice by placing each strap on each side of the bodice and stitching in place.



# Adding the Optional Ruffle

1. Place the ruffle right sides together and stitch the short ends.



2. Fold the ruffle in half, lengthwise with wrong sides together and raw edges matching.

Fold



3. Stitch two rows of gathering stitches around the raw edges and pull gathers.



4. Place over the bottom of the dress, adjusting gathers to fit. Stitch in place with a finished seam edge.



# Adding the Placket

## Placket Construction:

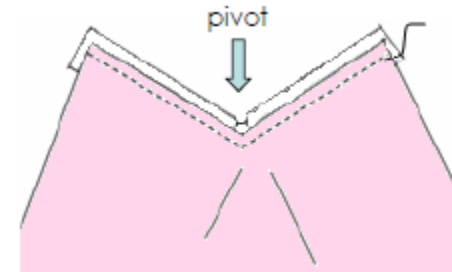
1. Find the middle of the back of the dress and cut a 4" slit from the top of the bodice down into the skirt.
2. Cut a placket 2 ½" wide x 9" long. Press in half with wrong sides together and raw edges matching.
3. Place the right side of the placket piece to the right side of the opening, matching raw edges and beginning at one top edge.

Pin around the "V" opening up to the other top edge.

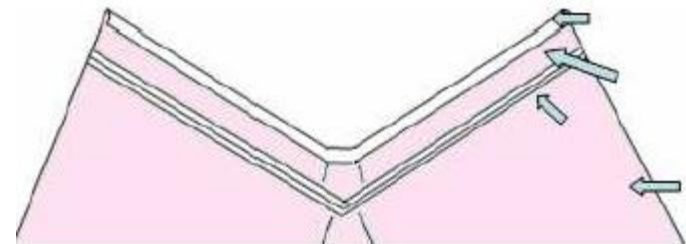
*(The placket is over-sized to allow for any extra length needed. The extra length may be trimmed off at this point.)*



3. From the wrong side (placket on the bottom), stitch, using a ¼" seam, catching only a few threads of the skirt at the bottom of the "V". Pivot the fabric and continue sewing on the other side of the "V".

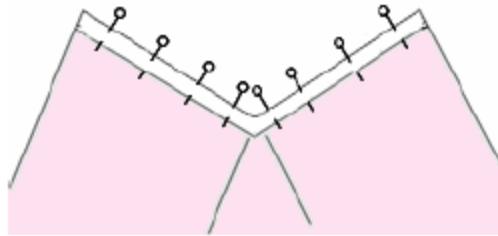


4. Press from the wrong side with the tip of the iron right at the seam. Press the seam towards the placket.
5. Press the raw edge of the placket 3/8" to the wrong side.



# Adding the Placket, cont'd

6. Pin this folded edge to the wrong side of the garment, just over the stitching line, encasing the raw edges. Press fold well.



7. Whip by hand to inside.



8. The placket should measure 1/2" wide. Fold the raw edges to the inside and stitch closed. Turn under the right side and stitch in place at the top. Leave left side extended. Press.



## Finishing the Dress:

1. Stitch ribbon at waist in a bow or covering waist seam, if desired. A bow or flower can also be formed with spaghetti bias tubing. Stitch by hand to front bodice.
2. Mark three buttonholes evenly spaced on the right back placket. Stitch by machine or hand.
3. Sew buttons on the left back placket to correspond with the buttonholes on the right.





# Simple Elegance

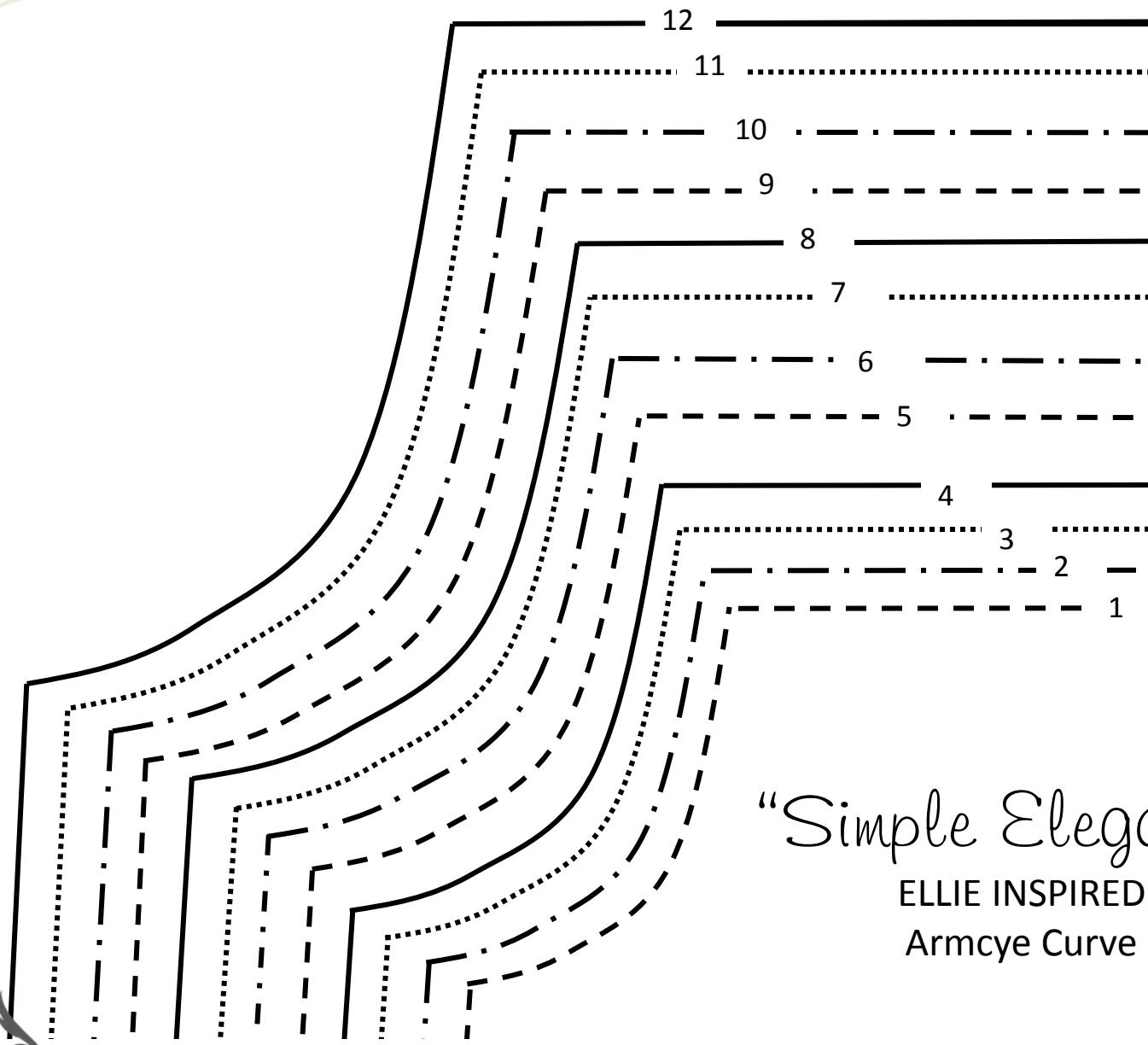
By Laura Johnson. For personal use only. All rights reserved. Copyright © December 2011. No part of this pattern may be reproduced or copied without permission in writing from the author. To see more patterns by Laura Johnson go to [www.ellieinspired.com](http://www.ellieinspired.com).

Fair use of this pattern are subject to the following conditions:

There can be NO resale or reproduction of this pattern in part or whole without written consent from the designer Laura Johnson. This includes sharing, tracing, or forwarding the pattern to anyone except the original purchaser.

If you sell garments made using this pattern, in consideration of the many hours spent on the design, please always give credit to Ellie Inspired as the designer (i.e. "Simple Elegance" dress pattern by Ellie Inspired, [www.ellieinspired.com](http://www.ellieinspired.com)). No mass production is permitted using this pattern.

For questions on sewing patterns by Ellie Inspired, visit the discussion forums on our website: [www.ellieinspired.com](http://www.ellieinspired.com)



“Simple Elegance”

ELLIE INSPIRED  
Armcye Curve

